

SWITCH TO SMARTER RETAIL
POWERED BY

ODIGO

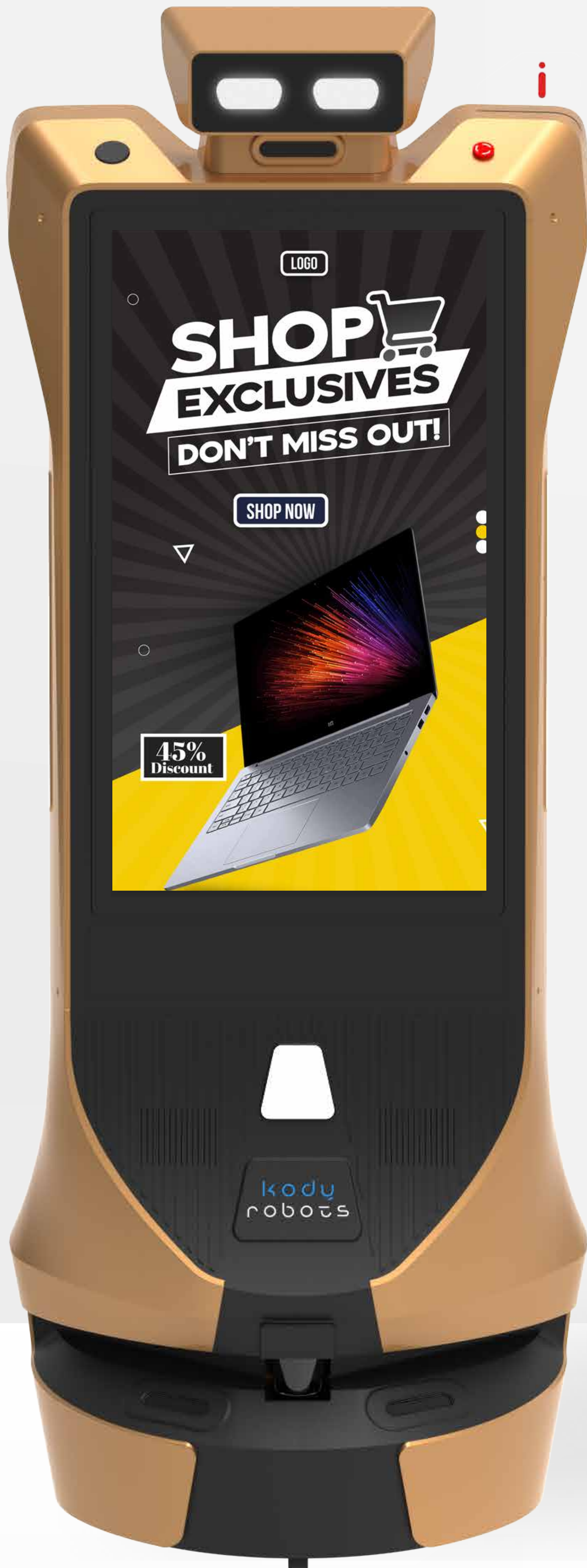


INTRODUCING ODIGO

BUILT FOR ELECTRONICS RETAIL FLOORS AND PRODUCT EXPERIENCE STORES

Odigo is an AI-powered autonomous engagement robot that adds an interactive digital layer to electronics retail spaces. It brings product stories, live demos, and brand campaigns directly into shopper pathways instead of keeping them confined to shelves and walls.

As it moves across category zones, Odigo helps customers explore devices, compare features, and discover offers through touch-led content and guided journeys. It stays active throughout store hours, supporting faster product understanding while easing the load on sales staff.



Functional Highlights



360° autonomous mobility powered by AI navigation



Multilingual speech and interactive touch screen



Sleek, futuristic design built for high-traffic environments



Remote ad scheduling and cloud-based content management ad targeting



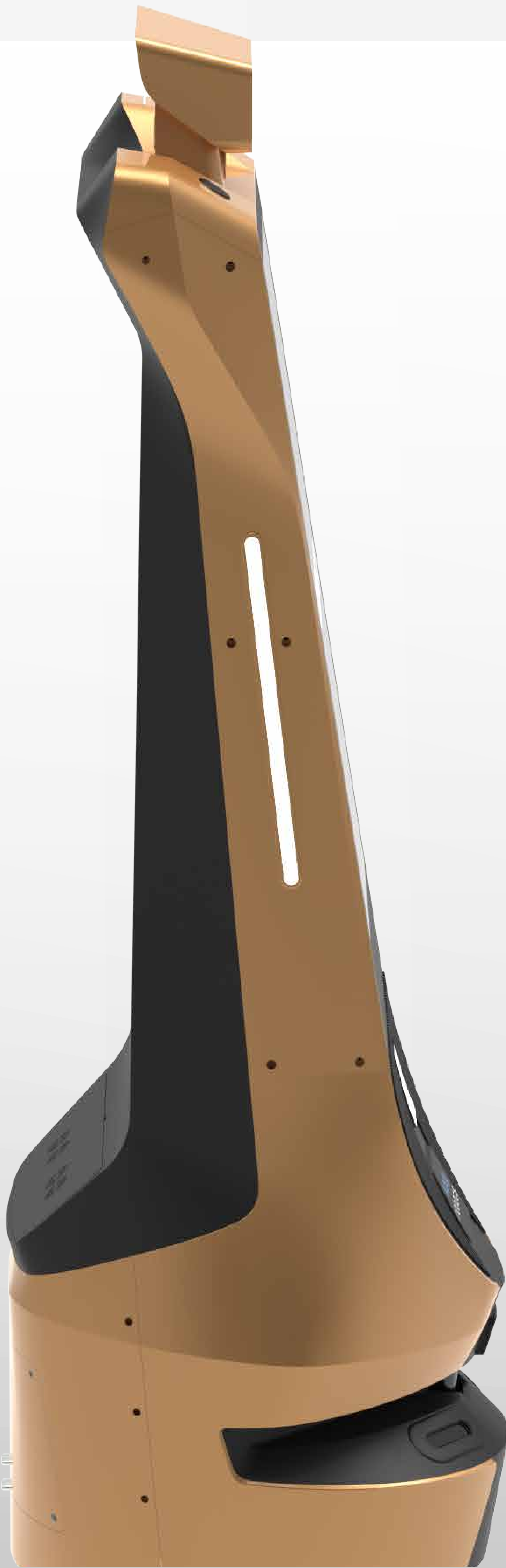
Dual 32" high-definition digital advertising screens (front and rear)



Real-time audience analytics (age, gender, dwell time, impression count)

Other Key Features

- Automated Charging
- Upto 10 hour Battery Life
- Centralized Dashboard
- Low Noise Mode
- Sleek & Futuristic Design
- Customizable Speed Settings



ACTIVATE ELECTRONICS RETAIL FLOORS WITH ODIGO



Mobile Product Experience Display

- Operates as a roaming digital screen inside large electronics stores
- Carries brand stories and product visuals into shopper pathways
- Brings campaign messaging closer to decision zones
- Encourages hands-on interaction through touch content



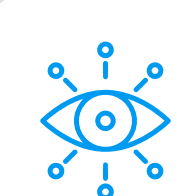
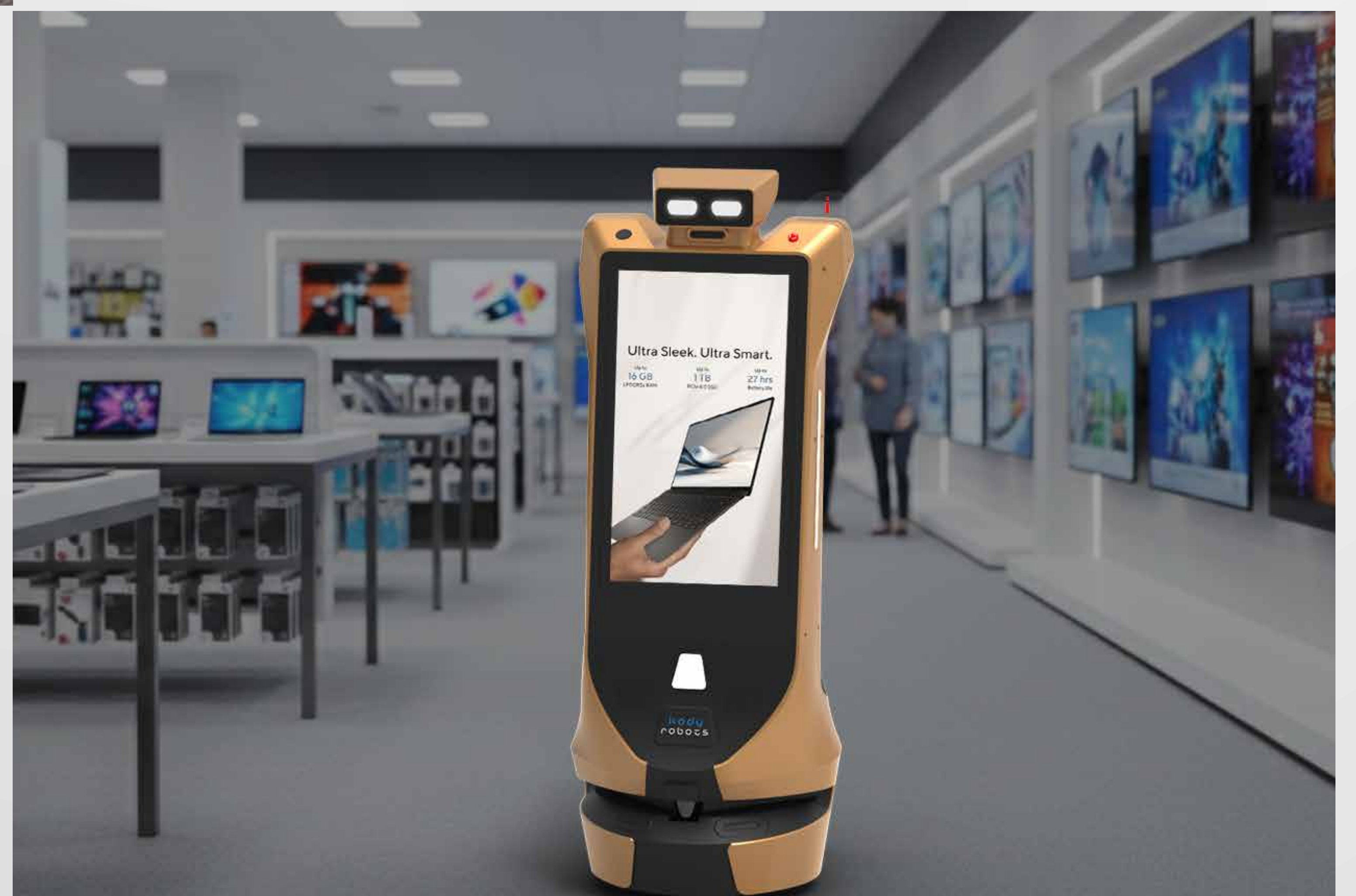
In-Store Shopper Guidance

- Directs customers to product categories and brand sections
- Helps locate demo counters and comparison areas
- Supports smoother movement across large store layouts
- Reduces dependency on manual floor assistance



Smart Product Content Delivery

- Explains device features, specs, and use cases visually
- Simplifies complex tech information into guided flows
- Switches content based on category zone and interaction
- Supports multi-product comparison journeys



High-Impact Retail Visibility

- Extends brand presence beyond shelves and posters
- Keeps promotions moving across high-traffic areas
- Improves message recall through dynamic media
- Keeps campaigns current with quick content updates



ELECTRONICS RETAIL STORES & TECH EXPERIENCE CENTERS

Inside electronics retail environments, Odigo strengthens in-store engagement by bringing interactive product content and guided discovery directly onto the sales floor. It helps shoppers understand devices faster, compare options more easily, and move across product categories with less friction.

By combining mobility, interactive displays, and real-time insights, Odigo supports both customer self-exploration and staff-led selling, improving floor efficiency without interrupting the retail experience.

Key Applications



Interactive Shopper Experience

- Guided exploration across smartphones, TVs, and accessories
- Smart filtering by brand, price range, and specifications
- Assisted browsing before sales advisor engagement



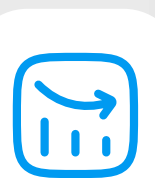
Product Demonstration

- Feature walkthroughs for cameras, processors, display quality, and battery life
- Side-by-side comparisons between competing models
- Use-case simulations for gaming, photography, streaming, and productivity



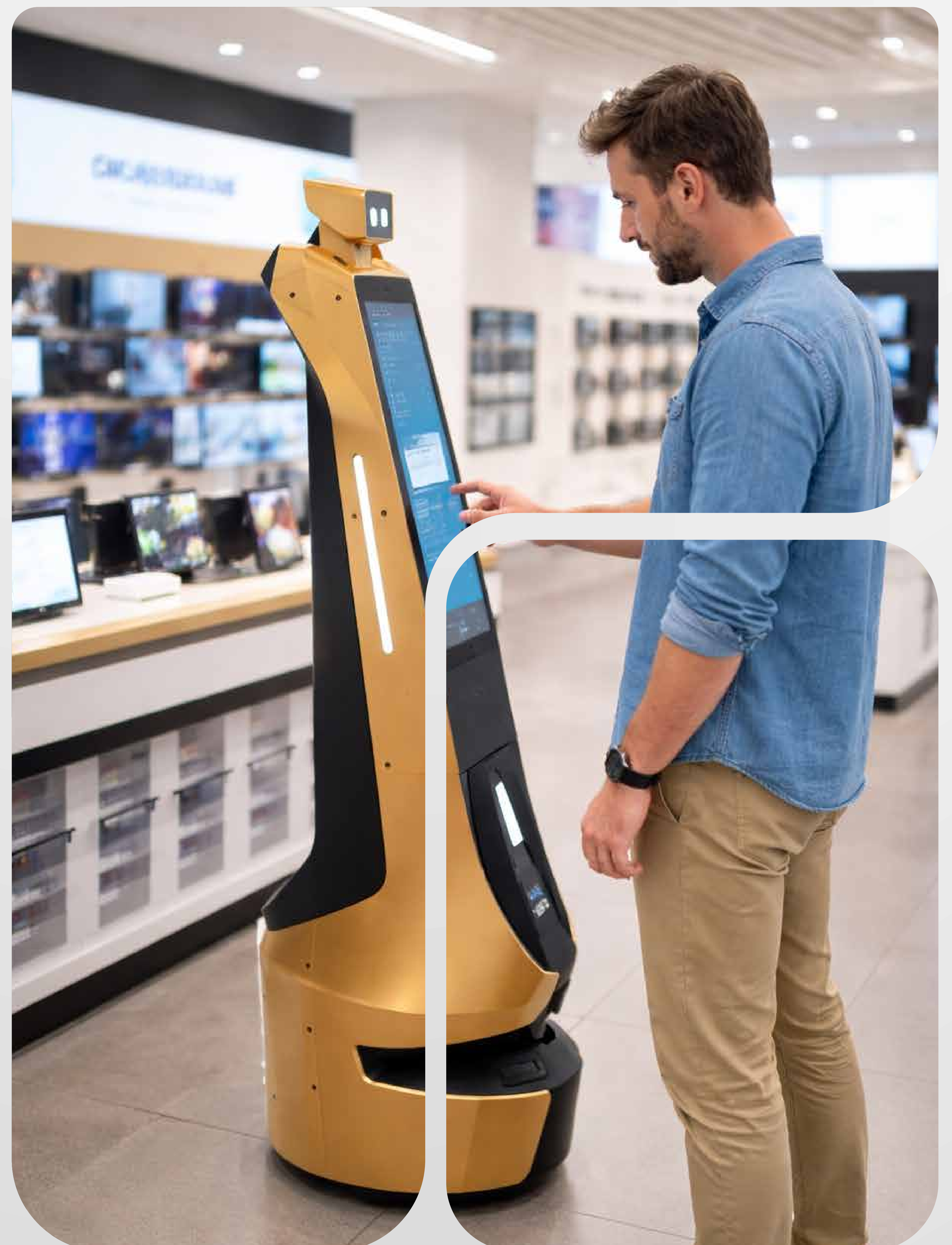
Product & Campaign Spotlighting

- Promotes new launches and limited-time electronics offers
- Highlights flagship models and priority SKUs
- Rotates brand campaigns across high-traffic store zones



Retail Floor Support

- Answers common product queries on screen
- Reduces repetitive specification explanations for staff
- Maintains engagement during peak shopping hours



Critical Features

Dual UHD
Interactive Displays

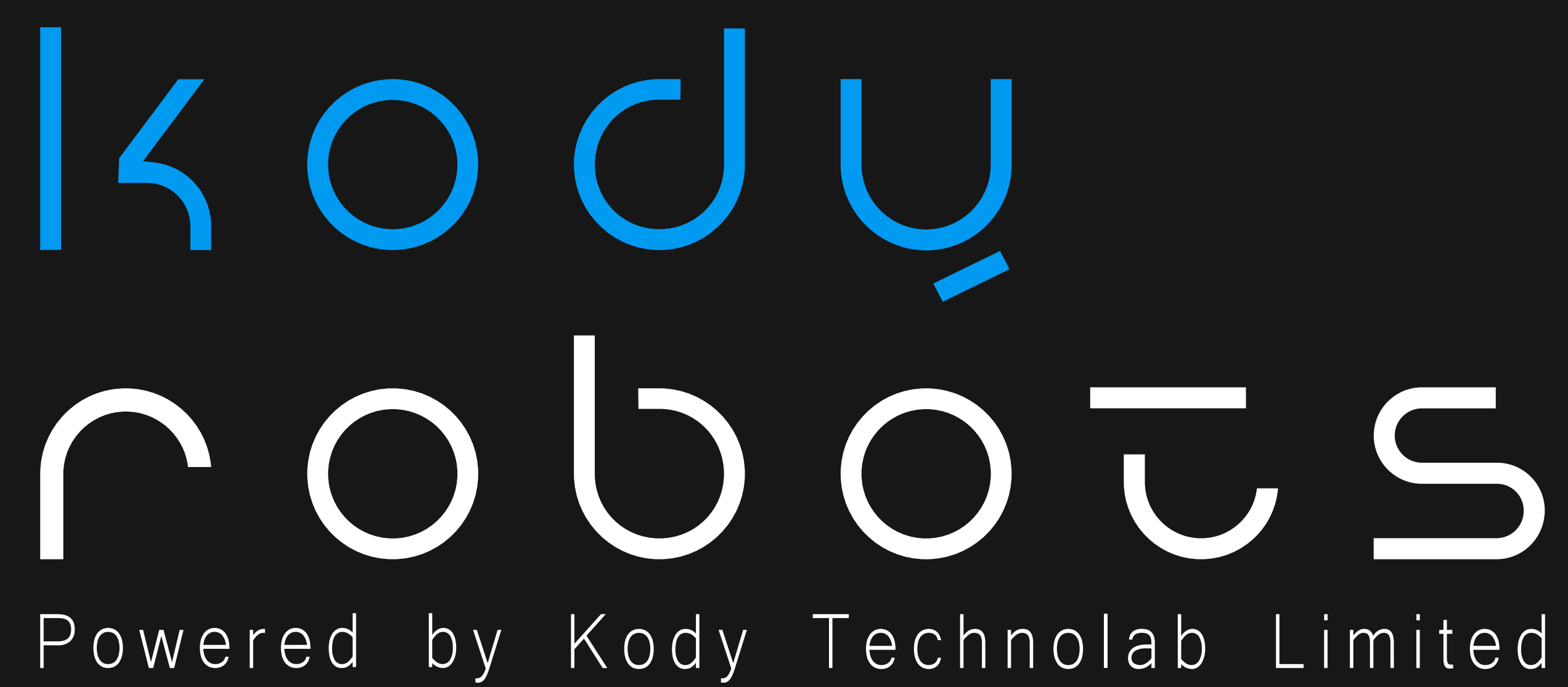
Real-Time Engagement
Analytics

Autonomous Indoor
Navigation

TECHNICAL SPECIFICATIONS



Particulars	Details
Platform	Linux / Android
RAM CPU	8GB
Interactive System	Android 11
Android System	8 GB
Speaker	10W
Connectivity	Wi-Fi Support (Dual-Band 2.4GHz & 5GHz)
Battery	Lithium-ion 25.6V / 100Ah
Charging	Automatic
Movement Speed	0.1 – 1 m/s (customizable)
Navigation	Laser + Visual SLAM + Obstacle Avoidance
Emergency Stop Switch	Immediate halt of all functions



Phone: +91 93167 56367

Email ID: sales@kodytechnolab.com

Visit us: www.kodyrobots.com

Head Office:

2nd floor, J block, Mondeal Retail park, Besides Iscon mall,
Iscon cross-road, SG Highway, Ahmedabad, Gujarat 380015



For more technical details check out our website.

Disclaimer:

We reserve the right to make technical changes to the products and changes to the contents of this document at any time without any prior notice. For orders, the respective agreed properties are decisive. Kody Robots assumes no responsibility for any errors or omissions in this document. We reserve all the rights to this document and the objects and illustrations contained herein. Reproduction, disclosure to third parties or exploitation of its contents even in part is prohibited without the prior written consent of Kody Robots.